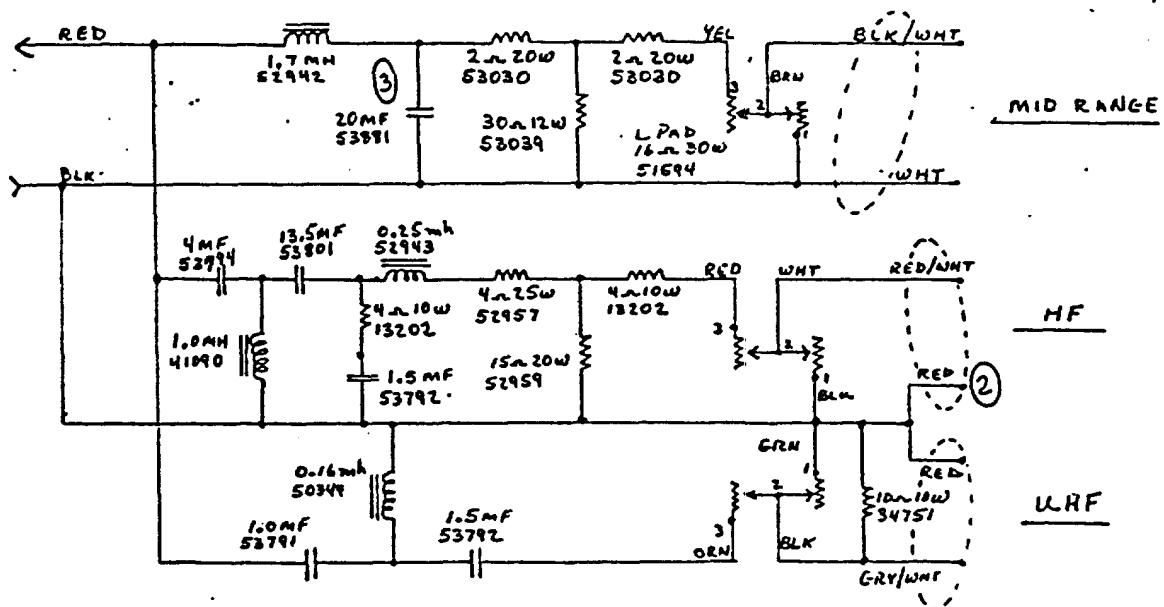


SPECIFICATIONS: NOTE ①

LOAD Z	LOW PASS	CROSS OVER	HIGH PASS	ATTENUATION
8	1 KHZ	1.6 KHZ	4.6 KHZ	4.5 KHZ
	MF -7	HF -15		VAR
8		7 KHZ	12 KHZ	12 KHZ
		HF -12.5	UHF -9	VAR

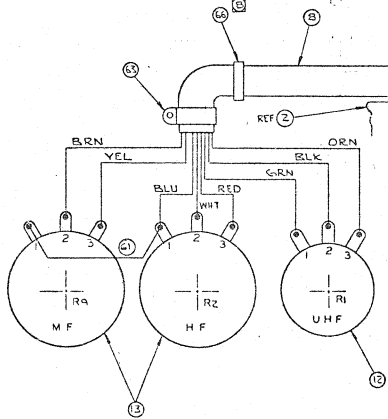
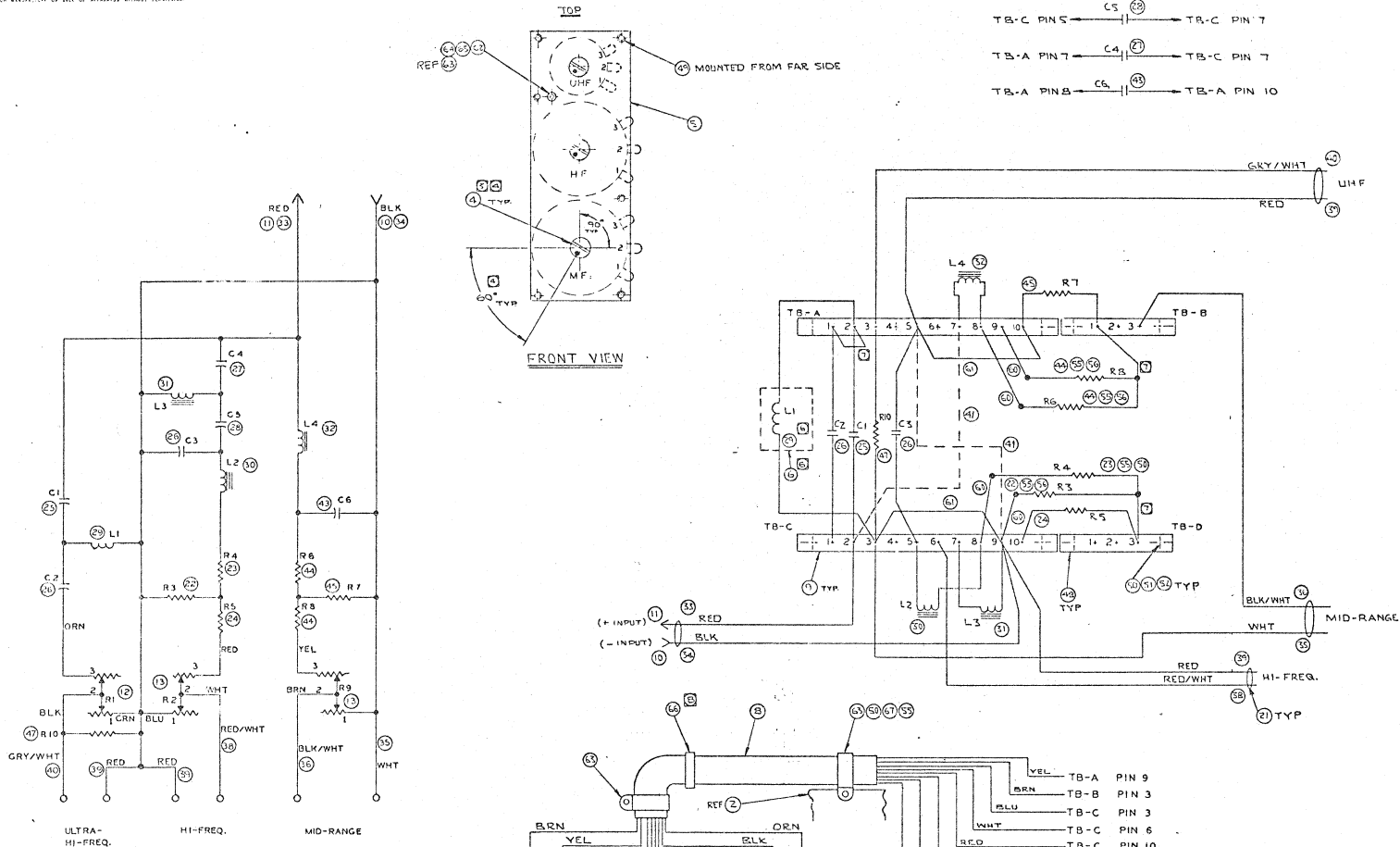
CIRCUIT:



NOTES:

- ① USE STANDARD TEST FIXTURE
- ② WAS BLACK ON EARLY UNITS
- ③ 20MF 53881 WAS (2) 10MF 53791

THIS DRAWING AND SPECIFICATIONS ARE THE PROPERTY OF JAMES S. LANSING COMPANY. THEY ARE TO BE KEPT IN STRICT CONFIDENCE AND SHALL NOT BE REPRODUCED, COPIED, OR USED BY ANY OTHER MANUFACTURER OR USER OF APPARENTLY IDENTICAL EQUIPMENT.



REAR VIEW OF L-PADS

67	12802	1	WASHER #4		
66	53813	1	BUSHING		
65	53853	1	SCREW #6-32 x 5/8 FLT HD.		
64	16353	1	WASHER #5		
63	53804	2	CABLE CLAMP		
62	539503	1	KEPS NUT #6-32		
61	11872	3	JUMPER BLK 3/2		
60	10293	4	JUMPER 2/2		
59	53192	4	SCREW #6-32 1/4 PL BK		
58	53867	4	WASHER #6 BL. OX.		
57	53810	4	STANDOFF		
56	16043	6	SCREW #4-40 1/2 RD. HD.		
55	48514	9	KEPS NUT #4-40		
54	53812	7	BUSHING		
53					
52	11496	2	HEX NUT #4-40		
51	11509	2	LOCKWASHER #4		
50	10044	11	SCREW #4-40 x 3/8		
49	51204	6	THREADED KINET #8-32		
48	52951	2	TERMINAL STRIP 3 TERM		
47	54751	1	RESISTOR 10.0 OHM 10W R10 MRD53039		
46					
45	53039	1	RESISTOR 30.0 OHM 12W R7 MRD53039		
44	53030	2	RESISTOR 2.0 OHM 20W R6, R8, MRD52960		
43	53831	1	CAPACITOR 20.0 MFD C6		
42					
41	37619	2	WIRE BLK 10" MRD 37055		
40	53871	1	WIRE 18GA GREY/WHT 42"		
39	39771	2	WIRE 18GA. RED 42"		MRD 37050
38	53869	1	WIRE 18GA. RED/WHT 42"		
37					
36	53870	1	WIRE 18GA. BLK/WHT 42"		
35	39819	1	WIRE 18GA. WHT 42"		MRD 37056
34	37635	1	WIRE 18GA. BLK 18"		MRD 37055
33	10710	1	WIRE 18GA. RED 24"		MRD 37050
32	52942	1	INDUCTANCE COIL 1.7 MH L4		
31	41090	1	INDUCTANCE COIL 1.0 MH L3		
30	52943	1	INDUCTANCE COIL 0.25 MH L2		
29	40344	1	INDUCTANCE COIL 0.16 MH L1		
28	53801	1	CAPACITOR 13.5 MFD C5 MRD 53803		
27	53794	1	CAPACITOR 4.0 MFD C4 MRD 53803		
26	53792	2	CAPACITOR 1.5 MFD C2, C3 MRD 53803		
25	53791	1	CAPACITOR 1.0 MFD C1 MRD 53803		
24	13202	1	RESISTOR 4.0 OHM 10W R2, R9		
23	52957	1	RESISTOR 4.0 OHM 25W R4 MRD 52961		
22	52959	1	RESISTOR 15.0 OHM 20W R3 MRD 52960		
21	35555	1	CABLE TIE		
20					
19					
18	51783	6	SCREW #8-32 x 1"		
17	35161	6	SCREW #8-32 x 1/2"		
16					
15	12893	4	SPEEDNUT		
14					
13	51594	2	L-PAD 16 OHM 30W R2, R9		
12	10285	1	L-PAD 8 OHM 4W R1		
11	40473	1	TERMINAL, MALE		
10	40289	1	TERMINAL, FEMALE		
9	11391	2	TERMINAL STRIP 10 TERM.		
8	53806	1	CABLE (B. CONDUCTOR) MRD 53864		
7	52982	1	FOILCAL MRD 55454		
6	52964	1	MOUNTING PAD MRD 50291		
5	52140	1	MOUNTING BOARD MRD 50291		
4	42192	3	KNOB MRD 50291		
3	53809	1	PERFORATED COVER MRD 53814		
2	52890	1	COVER		
1	10151	1	NETWORK CAN MRD 51032		

- 17 LOOSE ITEMS, PACKED IN 117193 BAG.
- 2 FOR TEST SPECS. SEE DWG. 52953 REV.
- 3 TOP OF KNOB TO PROTRUDE 1/16" ABOVE MTD. SD SURFACE.
- 4 KNOBS TO BE INSTALLED AS SHOWN WHEN SHAFT OF ITEM 13, 15 IS ROTATED TO FULL "S" POSITION.
- 5 DELETED
- 6 MAKE ITEM 6 TO BOTTOM OF ITEM 2 WITH SOLDES ADHESIVE. SECURE ITEM 29 TO ITEM 6 WITH SOLDES ADHESIVE.
- 7 JUMPER
- 8 INSTALL ON ITEM 8 BEFORE PLACING ITEM 8 THRU ITEM 3

REV	DATE	BY	CHKD	APPV	DESCRIPTION
1					
2					
3					
4					
5					
6					
7					
8					
9					
10					
11					
12					
13					
14					
15					
16					
17					
18					
19					
20					
21					
22					
23					
24					
25					
26					
27					
28					
29					
30					
31					
32					
33					
34					
35					
36					
37					
38					
39					
40					
41					
42					
43					
44					
45					
46					
47					
48					
49					
50					
51					
52					
53					
54					
55					
56					
57					
58					
59					
60					
61					
62					
63					
64					
65					
66					
67					